

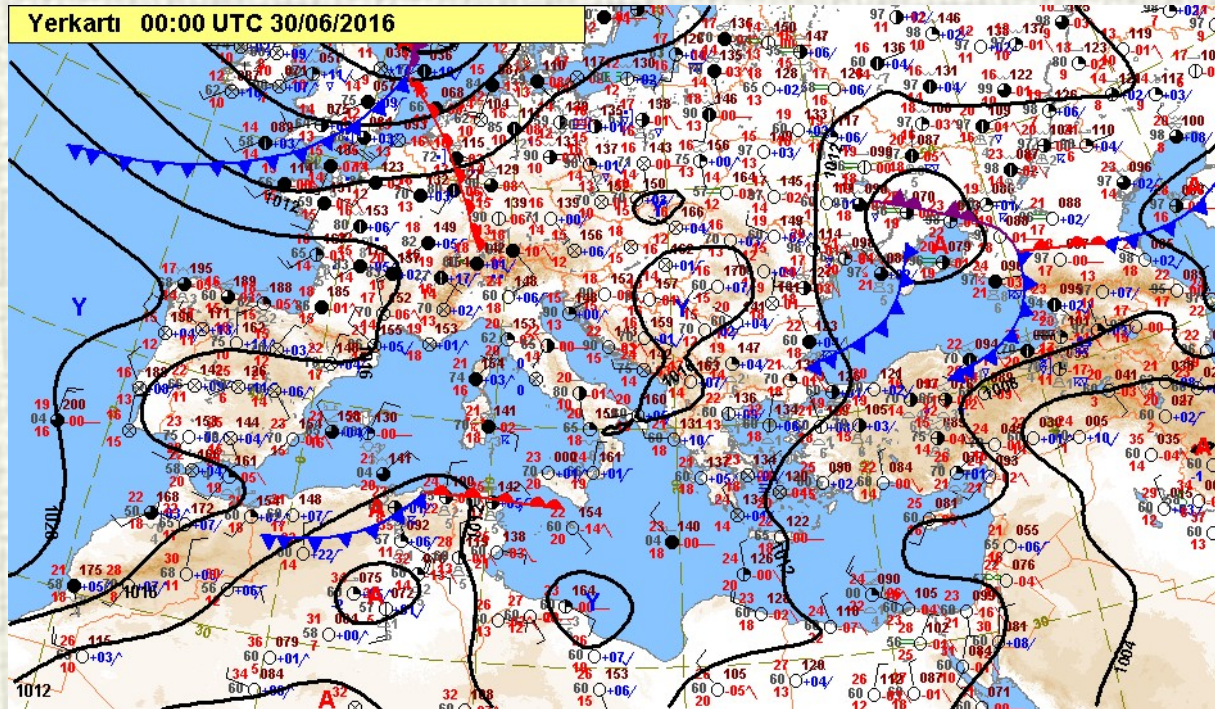


Samsun Potantial Flash Flood

30 June 2016

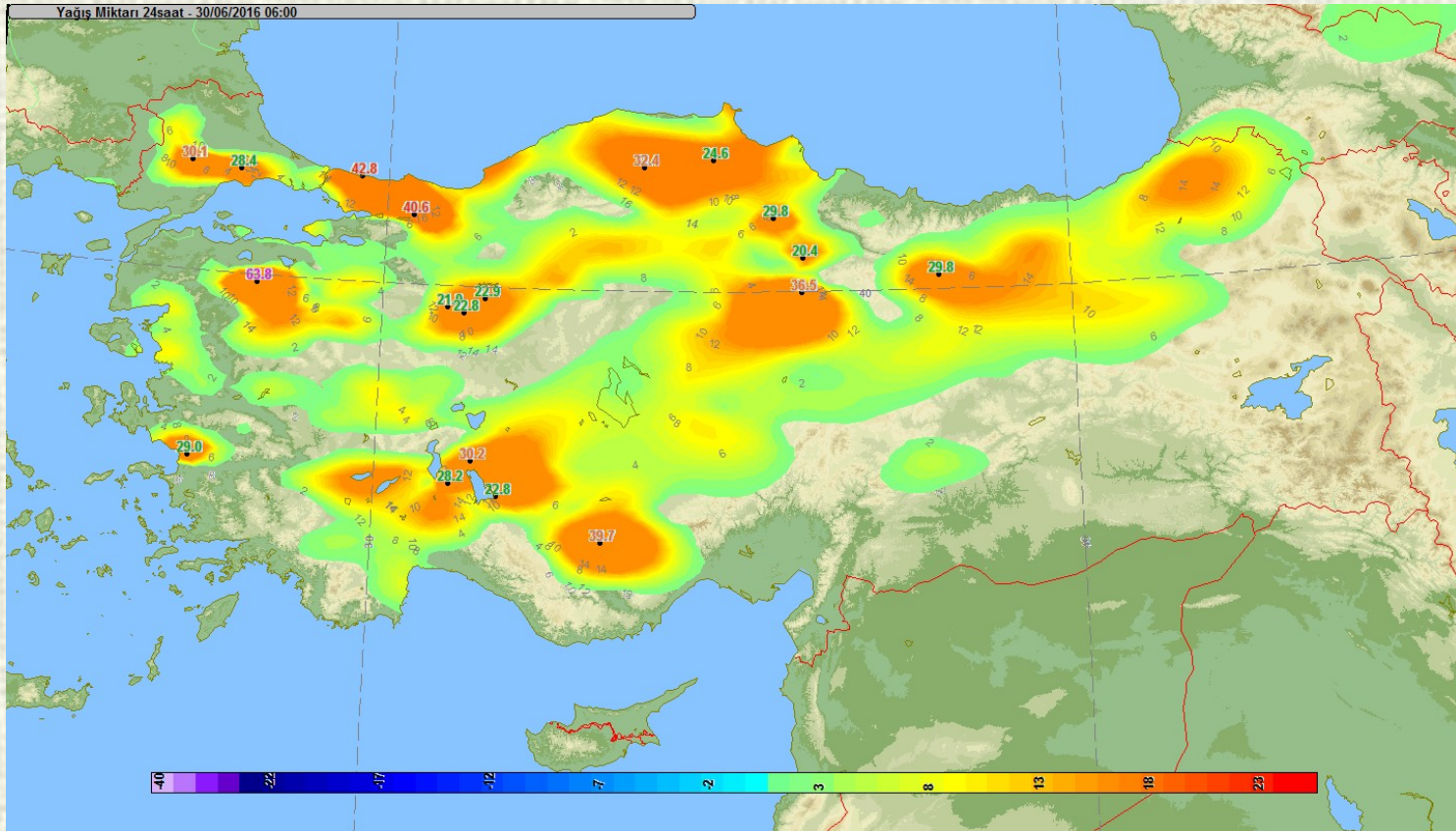
Group A

Synoptic Analysis-Surface Chart on June 30, 2016 00 UTC



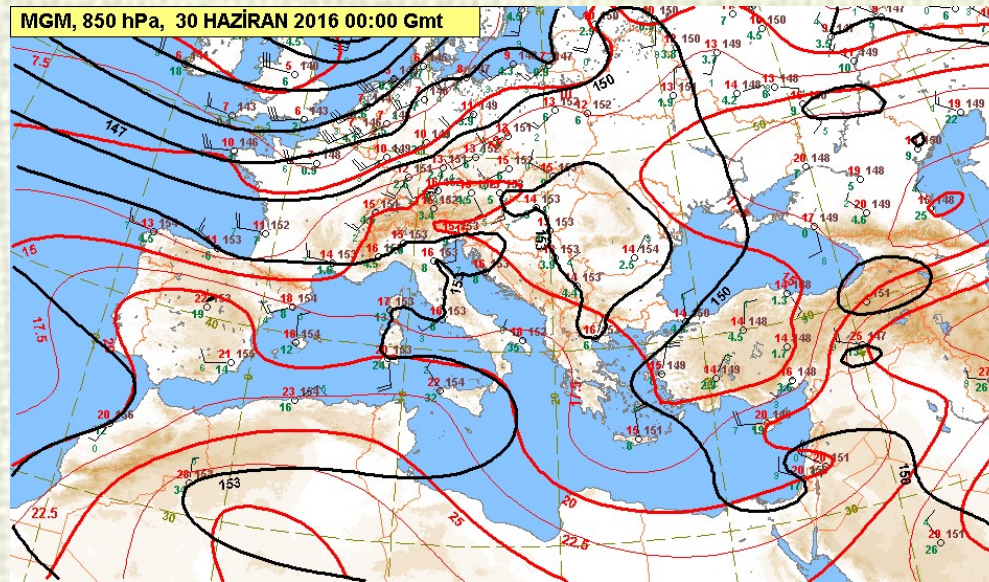
- A low pressure center with a frontal system Pressure value 1008 hPa was located in the south region of the Ukraine and ground pressure varies between 1004-1012 hPa. There is no significant pressure changes. Pressure has continuously rising trend during rains.

Daily rainfall amount



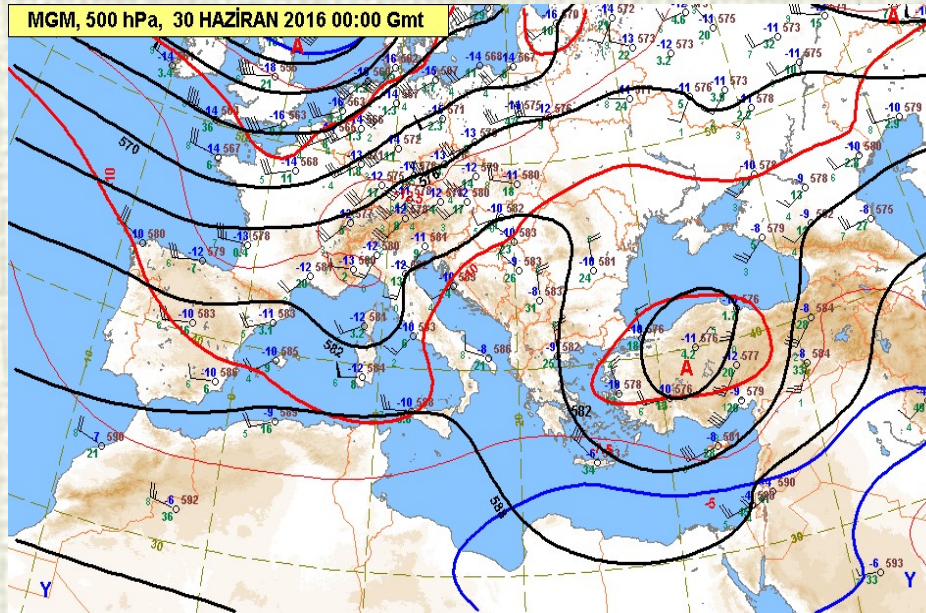
Daily rainfall amount measured at the 06.00 GMT 25-43 mm central Anatolia and Black Sea Coast.

Synoptic Analysis - 850 hPa on June 30, 2016



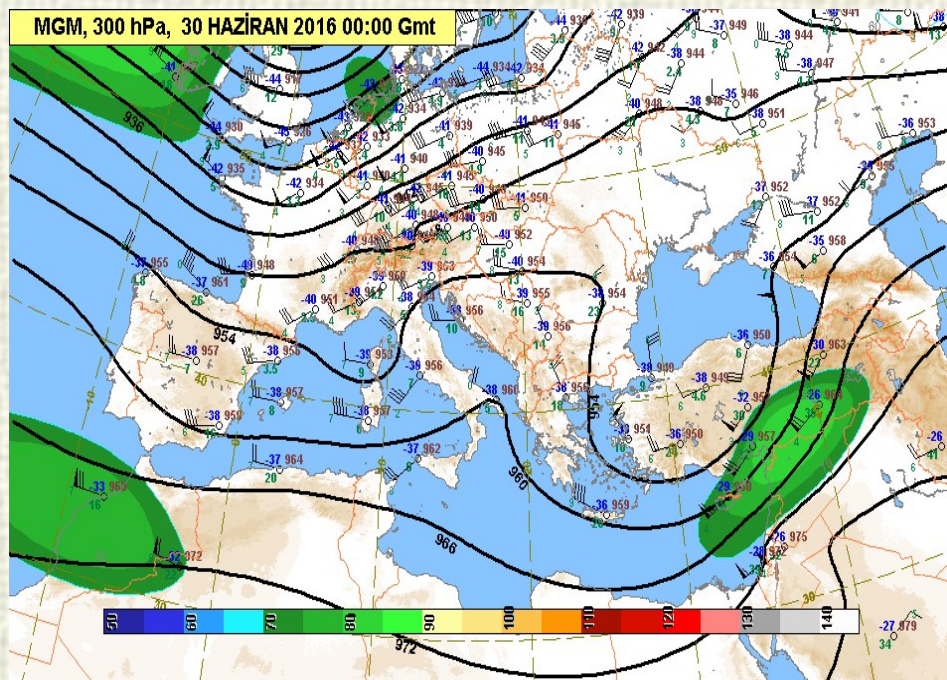
- There are a low pressure center over southeast part Turkey geopotential height is of 147 hPa. Isotherm value is of 15 ° C over the west part of Turkey.

Synoptic Analysis- 500 hPa on June 30, 2016



- 500 hPa geopotential height and temperature values were shown on the 30, June, at 00:00 UTC
- There is a low center over Turkey and Isotherm value is around -10°C over the Turkey at the 500 hPa level.
- Slow movement of the low center here has provided continuity of heavy precipitation.

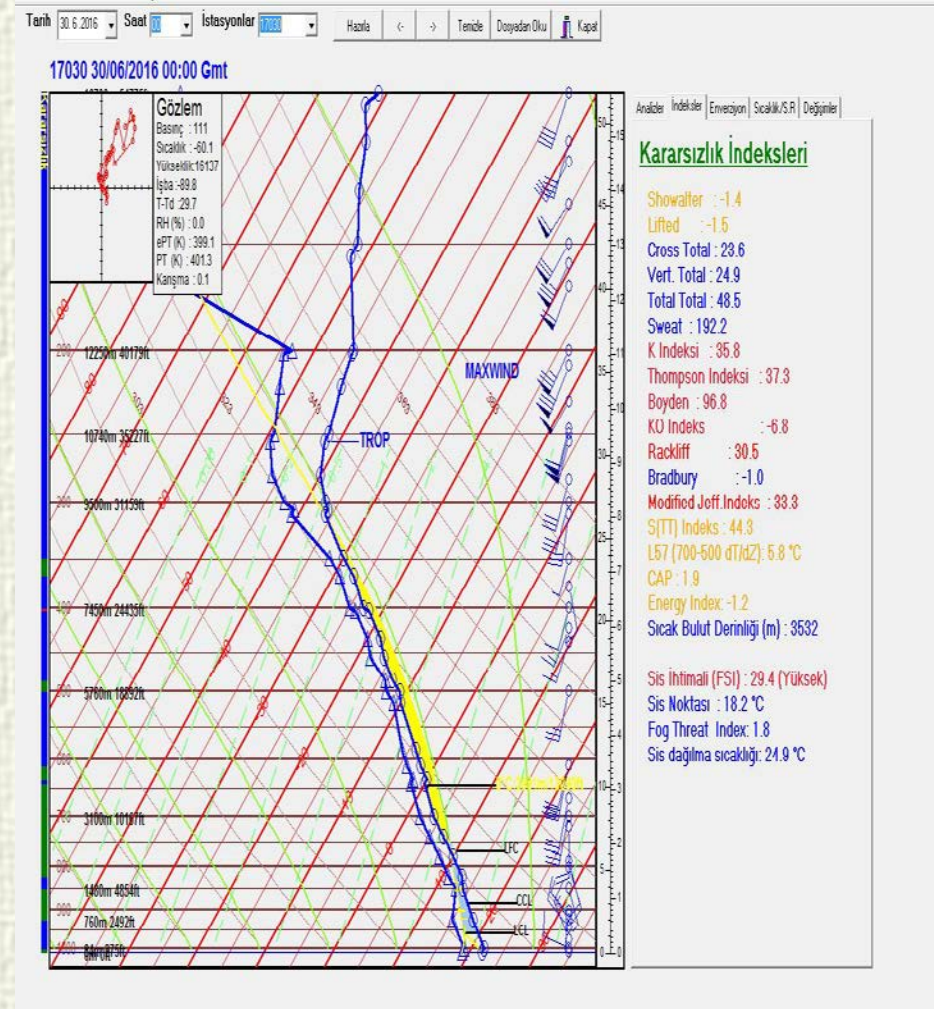
Jet Stream on June 30, 2016



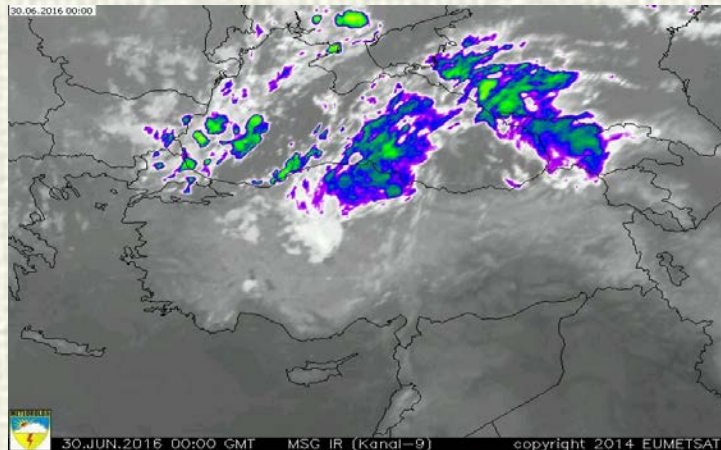
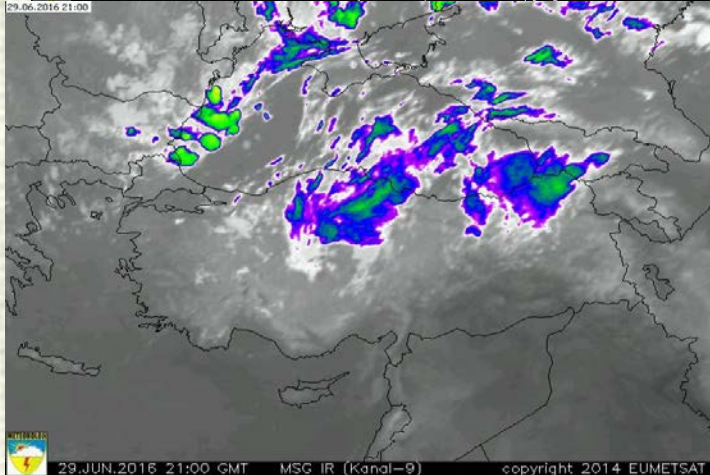
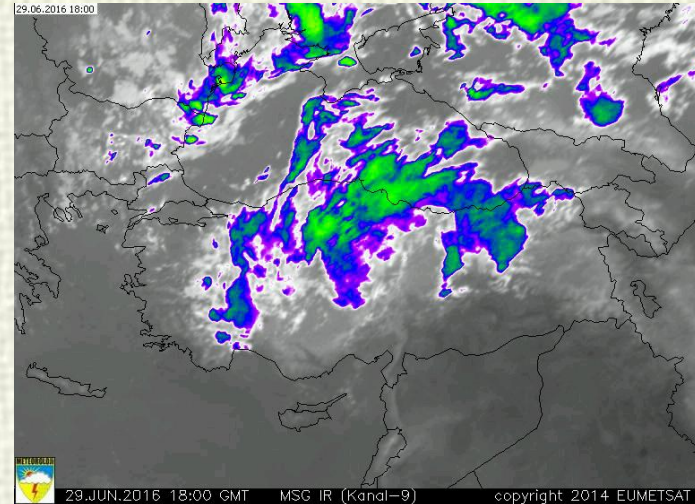
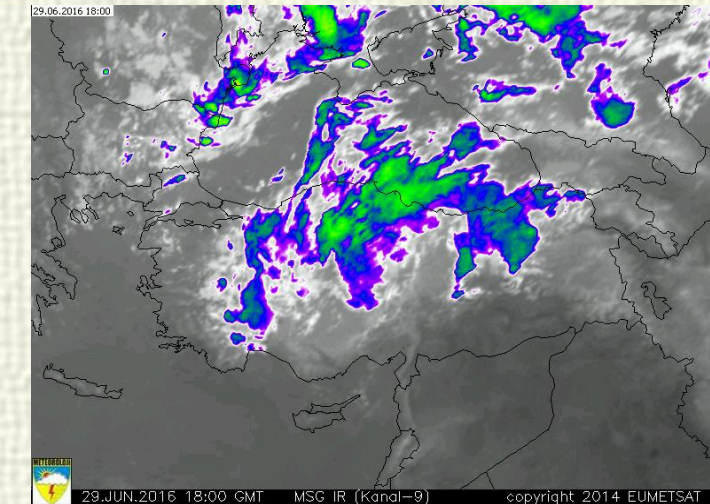
➤ Jet stream exist in the east Mediterranean Sea from to East Black Sea region having jet core wind speed of 80 knots (green).

Temp Analysis on June 30, 2016 at 00 UTC

- The nearest sounding station to the region Samsun, No: 17030, in Turkey .
- All index values are close to the eksrem values.
- K index, TT index and Sweat index shows values 36, 49 and 192 respectively.
- Temperature, humidity and wind is very suitable for precipitation.



Satellite Images between 15:00-18:00 21:00-00:00 UTC on June 29-30, 2016

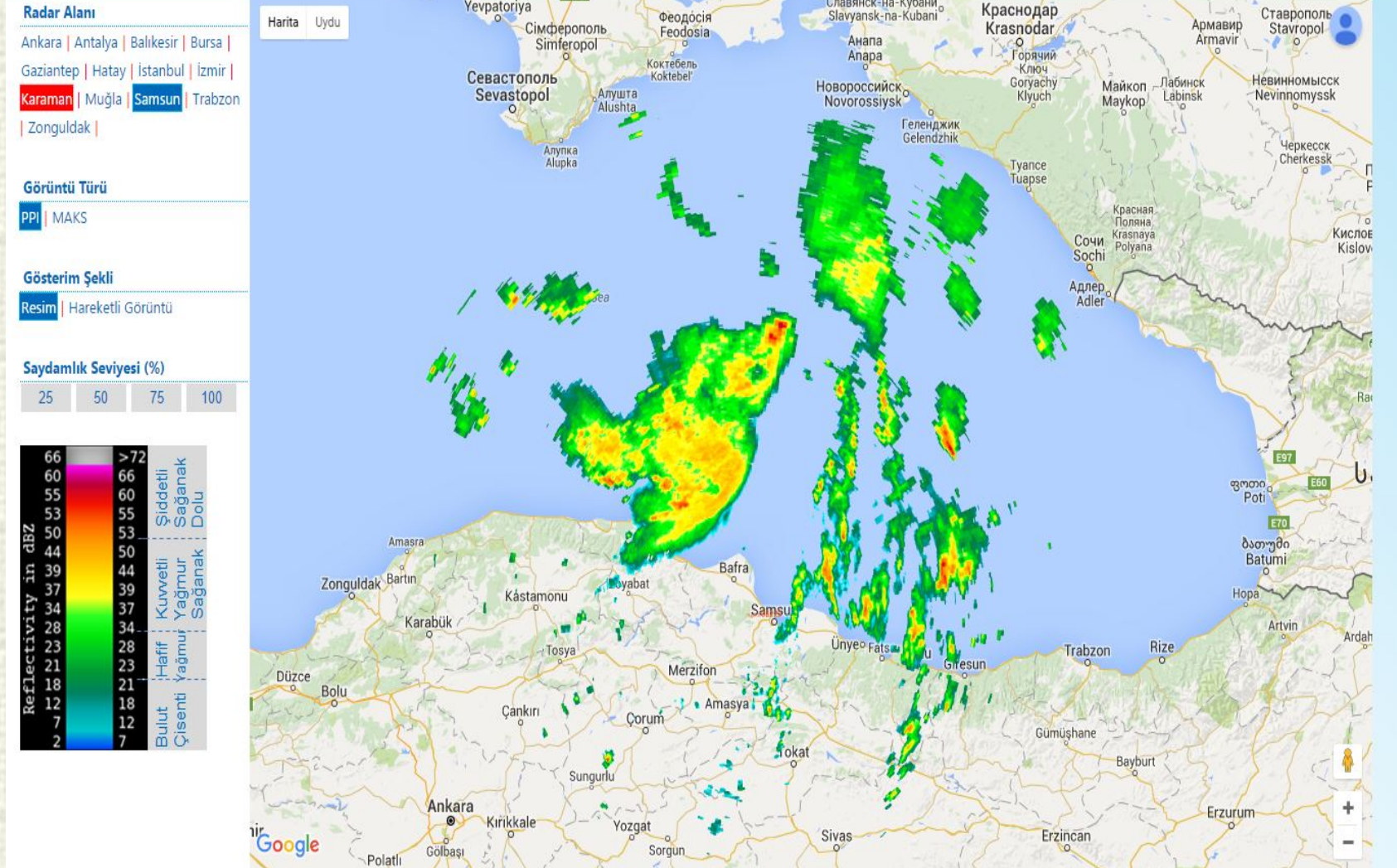


Satellite images on from 29.06.2016 at 15:00UTC to 30.06.20016 at 00:00 UTC show cloudiness over Sea Coast in grey scale.



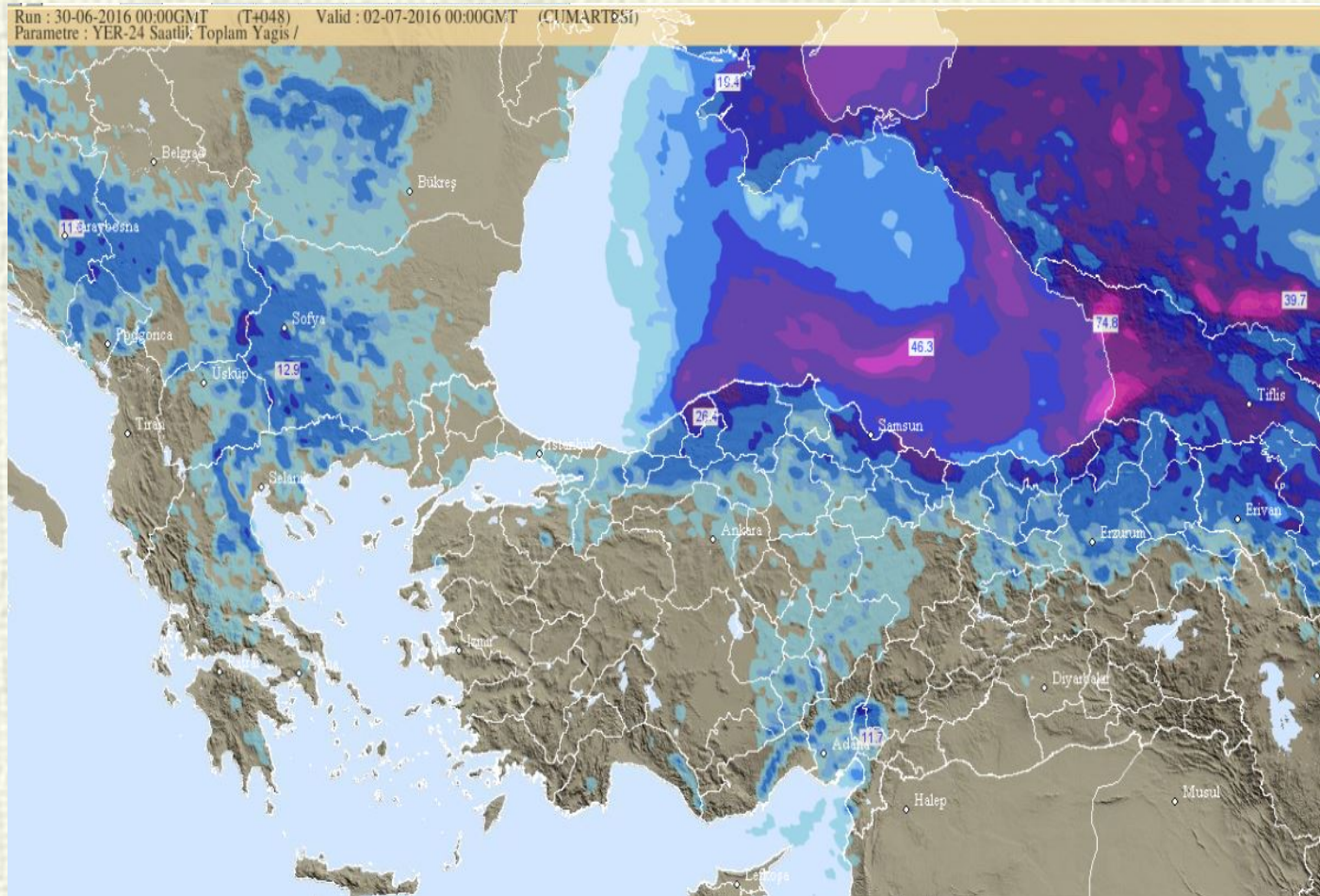
Radar Images at 03:00 and at 06:00 UTC on June 30, 2016

Radar Görüntüleri | 30 Haziran 2016 Perşembe 06:22 UTC

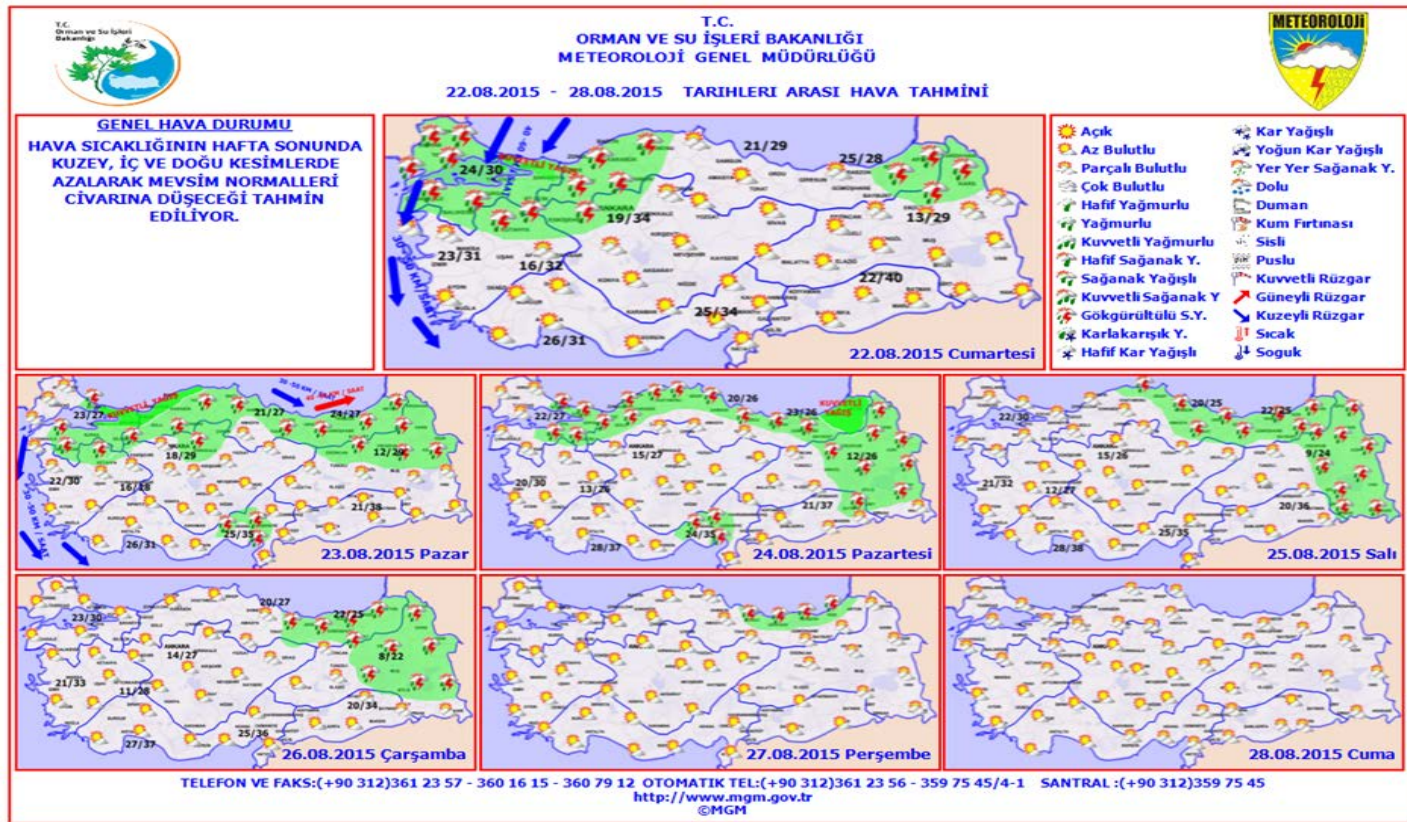




Forecast precipitation for 24 hours June 30, 2016 at 00:00 UTC from ECMWF



Forecasts and Warnings



➤ Weekly Weather Forecast for dates between 22 – 28/08/2015 published by Analysis Division of the TSMS.

➤ It was expressed that there would be heavy rainfall on the Eastern Black Sea Coast since August 21, 2015. **Watch out!!**



Forecasts and Warnings

Meteorolojik Uyarı

Tarih: 29 Haziran 2016 Çarşamba Saat: 15:30 Uyarı No: 195 Uyarı Kodu: Normal

Orta ve Doğu Karadeniz'de Bu gecedен İtibaren Beklenen kuvvetli Sağanak Yağışlara Dikkat!

Beklenen Hadise	Gökgürültülü Sağanak Yağış
Beklendiği Yer	Yurdun kuzey kesimlerinde görülecek yağışların bu gecedен yarın öğle saatlerine kadar Orta Karadeniz'de (Sinop, Samsun, Ordu, Çorum, Amasya ve Tokat) Yarın akşam saatlerinden itibaren ise Doğu Karadeniz'de (Giresun, Trabzon, Rize ve Artvin) kuvvetli ve yer yer çok kuvvetli olması beklendiğinden meydana gelebilecek olumsuzluklara (Ani sel, Su baskını, Yıldırım ve Heyelan) karşı dikkatli ve tedbirli olunmalıdır.
Başlama-Bitiş Zamanı	30.06.2016 00:00 TSİ 01.07.2016 06:00 TSİ
Hadisenin Şiddeti	Çok Kuvvetli Yağış
Oluşması Muhtemel Riskler	Ani Sel - Su Baskını - Yıldırım - Heyelan
Alınabilir Önlemler	Sellerden Korunma Yöntemleri Yıldırımdan Korunma Yöntemleri
Uyarı Yapan Merkez	Analiz ve Tahminler Şube Müdürlüğü

Yağış Şiddeti Sınıflandırması

Hafif Yağış	1 - 5 mm
Orta Kuvvette Yağış	6 - 20 mm
Kuvvetli Yağış	21 - 50 mm
Çok Kuvvetli Yağış	51 - 75 mm
Şiddetli Yağış	76 - 100 mm

➤ Meteorological warnings and evaluations for heavy rain around the Central Black Sea coast, particularly for the province of the Samsun, Sinop, Ordu and Çorum, for 24th day between 00.00-23.59 lokal and 29/06/2016 at 15:30 UTC published by Analysis Division of the TSMS.

➤ According to the warning, 51-75 mm rainfall was expected around the province of Rize and Artvin.

➤ **Expected to flash flood event and landslide**



Thank you for your kind attention...